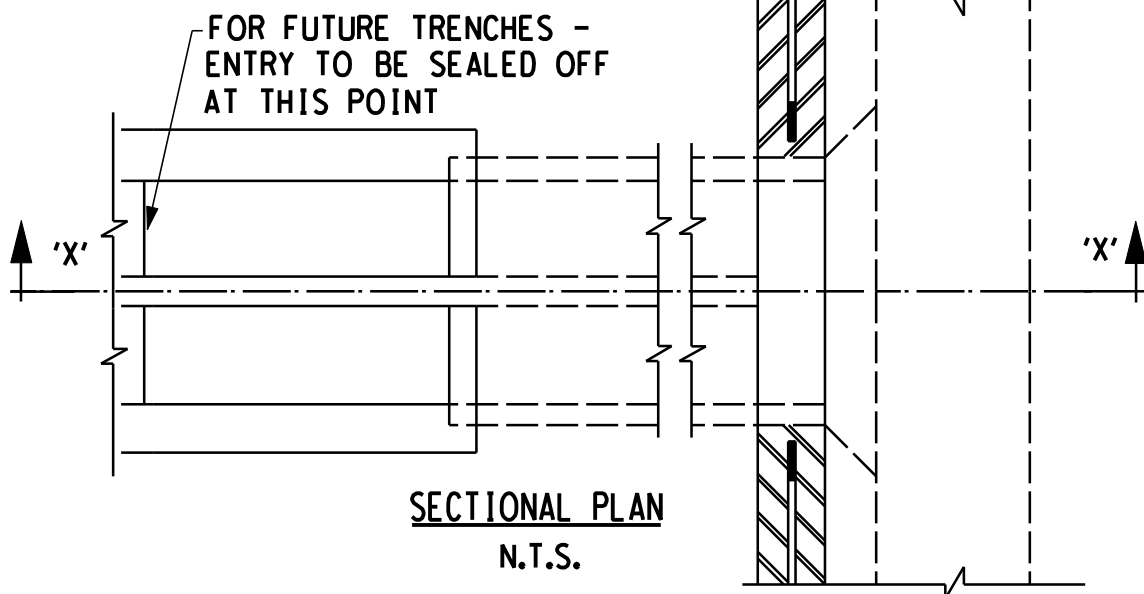
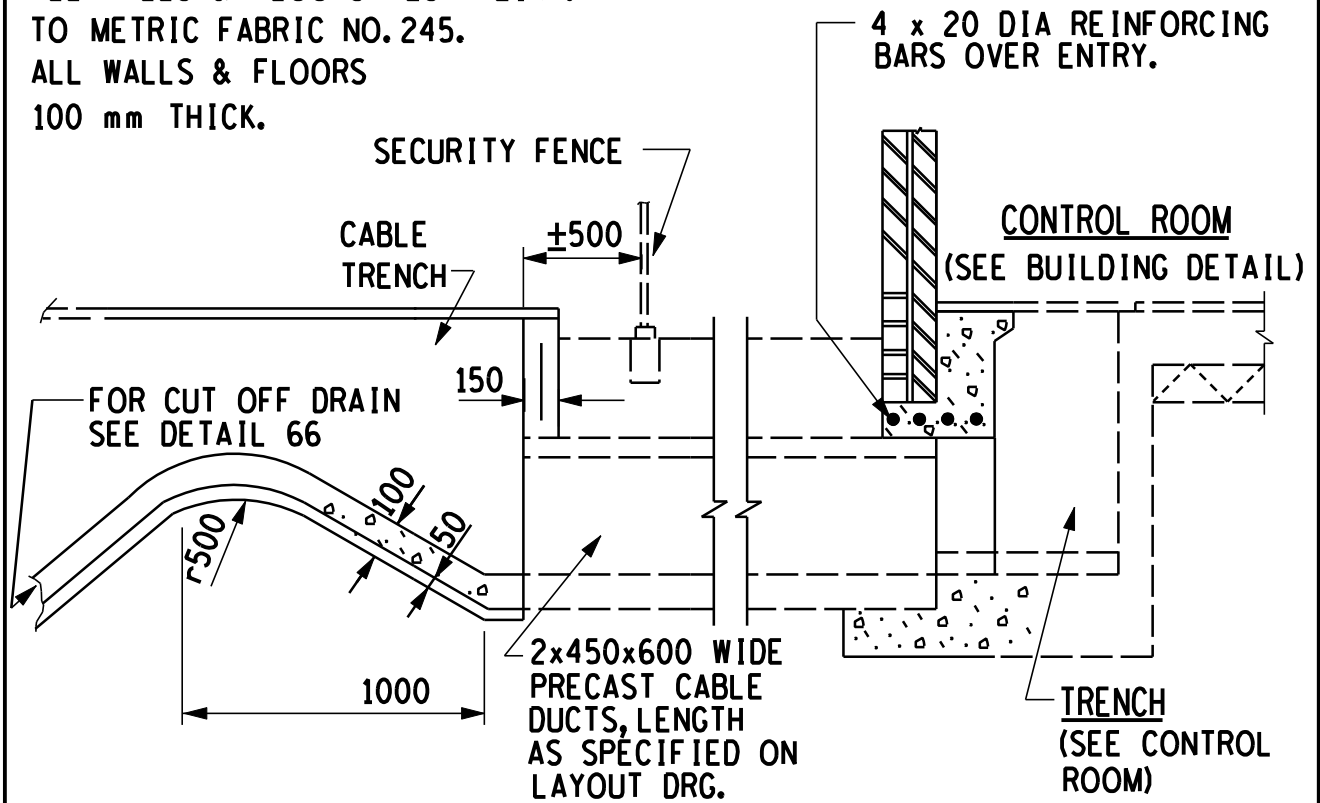


REINFORCEMENT :

ALL WALLS & FLOORS MESH REINF.
TO METRIC FABRIC NO.245.
ALL WALLS & FLOORS
100 mm THICK.

DETAIL 33



CABLE TRENCH

DOUBLE CABLE TRENCH AND DUCT ENTRY INTO CONTROL
ROOM. ALTERNATIVE SEE DETAIL 32.

THE C.A.D. REFERENCE NUMBER IS :
MUTS0.54/00390K33.R05



DRAWN
GETEKEN

Z.K.F.

23/4/80

CHKD
NAGES

R.J.C.

AUTH
MAS

J.J.

REV

5

DATE
DATUM

25/1/95

H V YARD CIVIL WORK
STANDARD DETAILS

0.54/390

SHEET 33

DRG.TEK
REGISTR

A4L